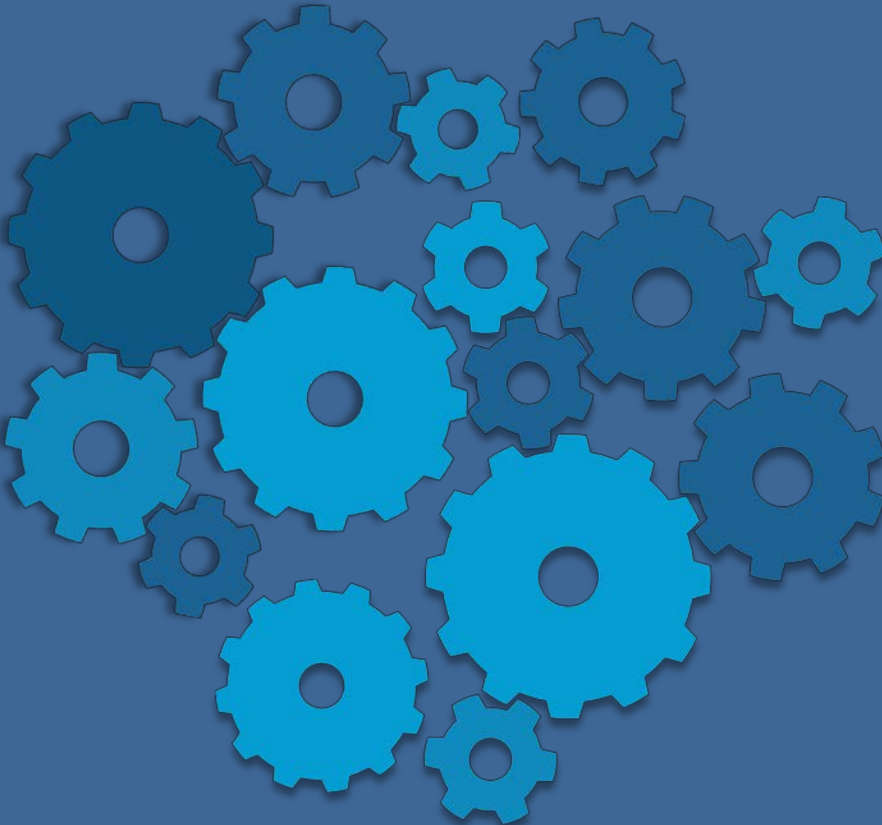


# 2015 Political Activities and Contributions Report

April 2016



**Prudential**  
Bring Your Challenges<sup>SM</sup>

# Contents



<u>Section</u>	<u>Page</u>
<b>A Note from the PAC Treasurer</b>	<b>3</b>
<b>Summary of Prudential Policies and Procedures for Political Activity</b>	<b>4</b>
<b>Prudential PAC Boards</b>	<b>6</b>
<b>Prudential PACs Federal Contributions</b>	<b>8</b>
<b>Prudential PAC State Contributions</b>	<b>17</b>
<b>Prudential PACs Contributions to PACs</b>	<b>22</b>
<b>Prudential New York PAC Contributions</b>	<b>26</b>
<b>Trade Association Dues</b> Annual dues, assessments and contributions of \$25,000 or more to trade associations and tax-exempt groups	<b>27</b>

# A Note from the PAC Treasurer



I am pleased to announce the release of our 2015 Political Activities and Contributions Report (“annual report”). At Prudential we are committed to operating openly and believe the best way to demonstrate how we do business is to communicate and provide transparency to our shareholders, customers, employees and other important stakeholders.

The decisions made by the government have a tremendous impact on how Prudential operates as a public company and competes in the global marketplace. Accordingly, it is important that the company maintain a presence in the public policy arena to express our viewpoints to legislators and regulators on key matters that impact how we operate as a business.

Prudential sponsors a number of initiatives to help support an active profile in legislative and regulatory processes. Such sponsored activities include direct engagements with state and federal lawmakers and regulators, partnerships with trade organizations, operation of political action committees and, to a lesser extent, the use of corporate funds to support political organizations.

Our annual report provides detailed information on Prudential’s sponsored political contributions and annual association dues, assessments and contributions to trade associations exceeding \$25,000. The Company-sponsored political action committees operate in accordance with all relevant state and federal laws.

Further information about our political action committees is available on the Federal Election Commission’s website at [fec.gov](http://fec.gov). This report also provides a summary of Prudential’s policies and procedures for political activities.

Prudential does not provide direct independent expenditures intended to support communications that expressly advocate the election or defeat of a candidate. In 2015, Prudential did not contribute corporate funds to support any state or local ballot initiative nor did it contribute direct financial or other support to candidates for public office.

If you have any questions related to Prudential’s political activities or contributions please submit an email to [prudential.pac@prudential.com](mailto:prudential.pac@prudential.com).

Sincerely,

Roman Gabriel  
Treasurer, The Prudential PACs

# Summary of Prudential Policies and Procedures for Political Activity



Prudential Financial, Inc. (“Prudential”) recognizes the importance of participation in the American democratic process, both by individuals and the Company. Prudential also values transparency in this process and appreciates the need to disclose its political activity in an effort to promote ethical corporate governance, participation in political processes and confidence in the American democratic systems.

Prudential’s United States political contributions and those of its political action committees (“PACs” or “Prudential PACs”) are made in accordance with federal and state campaign finance and other applicable laws without regard to the private political preferences of Prudential executives. Internal policies and standards adopted by the Company also govern political activity. The Corporate Governance and Business Ethics Committee of Prudential’s Board of Directors provides guidance and approves the political contributions strategy and policy of the company.

All employees are permitted to engage in political activities to the extent permitted by law, provided they do so as individuals and not as representatives of the Company. Certain personal political contributions of employees and family members are prohibited or restricted under Company policy in order to comply with federal, state and local “pay-to-play” laws pertaining to contributions by vendors to the public sector.

Prudential prohibits individual political contributions for the purpose of influencing or attempting to influence the award of business to the company.

In accordance with federal, state, and local campaign finance laws, Prudential may provide corporate political contributions to state political party committees or other political committees excluding candidate committees. Prudential will not contribute financial or other support to United States political parties, committees, or candidates for public office or support other organizations except where approved by the Head of External Affairs in consultation with the Law Department. All direct corporate contributions will be included in this annual report.

Prudential may also contribute to 527 groups or super PACs in accordance with all federal, state, and local campaign finance laws. Such contributions of \$25,000 or more will be approved by the Head of External Affairs in consultation with the Law Department and will be disclosed in this annual report.

Prudential sponsors PACs to which eligible employees working in the United States may contribute. Such contributions are strictly voluntary, and the Company and its management will not penalize anyone for electing not to participate.

Political contributions made by Prudential PACs provide a voice for Prudential employees so that they may participate in the American democratic process. Prudential PACs support candidates from both major political parties who share Prudential’s vision and values of protecting the retirement, savings, investment and insurance needs of all Americans.

# Summary of Prudential Policies and Procedures for Political Activity



Political contribution determinations are made by the Prudential Financial, Inc. Federal Political Action Committee and Prudential Financial Inc. State and Federal Political Action Committee Boards of Directors in consultation with Prudential's External Affairs Department and are executed by the Administrator and Treasurer of the Prudential PACs. In addition, a review of the Prudential PACs is conducted every five years by an independent function.

A complete membership listing of the Prudential PACs Boards is included on pages 6 and 7. Each board meets once per year at a minimum. The PAC Director, Treasurer and Boards of Directors are responsible for, respectively, managing and administering all Prudential PACs, including making final decisions as to political contributions and related activities of the PACs.

The External Affairs Department works closely with the Legal and Compliance Departments to ensure that Prudential's internal policies and procedures relating to U.S. political activities are strictly maintained. In addition, a review of the Prudential PACs is conducted every five years by an independent function. Prudential and Prudential's PACs file reports and disclose political contributions and lobbying expenditures to the public through the means prescribed by state and federal governmental authorities.

In their dealings with public officials and government employees, all Prudential employees are required to comply with Prudential's policies on political activities, lobbying and gifts and entertainment, including tracking and reporting activities and related expenses involving dealings with public officials and employees. Prudential lobbyists also are required to behave in a manner that meets generally accepted standards of conduct of the profession.

## BOARD

**Susan Blount\***

Executive Vice President & General Counsel

*\*Resigned October 2015*

**Scot Hoffman**

Vice President  
Global Marketing & Communications

**Michael Lillard**

Head of Fixed Income & Chief Investment Officer  
Prudential Fixed Income

**Scott Sleyster**

Senior Vice President & Chief Investment Officer

**Rob Tyndall**

Vice President, Risk Management  
Prudential Retirement

**Robert DeFillippo \***

Chief Communications Officer  
Global Communications

*\* Resigned February 2015*

**Barbara Koster**

Senior Vice President  
Global Business & Technology Solutions

**Jeanette Pollock**

Vice President  
Enterprise Discontinued Business Solutions

**Sharon Taylor**

Senior Vice President  
Human Resources & Corporate Social Responsibility

**Rex Wackerle**

Vice President  
External Affairs

## OFFICERS

**Mark Grier**

PAC Chairman  
Vice Chairman  
Office of the Chairman

**Ann Kappler**

PAC Vice Chairman  
SVP, Deputy General Counsel and  
Head of External Affairs

## ADMINISTRATION

**Roman Gabriel**

PAC Treasurer  
Vice President, External Affairs

**John Feeney**

Assistant PAC Treasurer  
Vice President, External Affairs

**Brandy Stacks**

PAC Director  
Director, External Affairs

## BOARD

**Robert DeFillippo \***

Chief Communications Officer  
Global Communications

*\* Resigned February 2015*

**Joseph Emanuel**

Vice President  
Corporate Counsel

**Jim Gemus**

Vice President  
Group Insurance

**Scot Hoffman**

Vice President  
Global Marketing & Communications

**Jeanette Pollock**

Vice President  
Enterprise Discontinued Business  
Solutions

**Dylan Tyson\***

Vice President  
Pension Risk Management/Retirement

*\*Resigned June 2015*

**Rex Wackerle**

Vice President  
External Affairs

## OFFICERS

**Ann Kappler**

PAC Chairman  
SVP, Deputy General Counsel  
and Head of External Affairs

**Michael McCann**

PAC Vice Chairman  
Vice President  
External Affairs

## ADMINISTRATION

**Roman Gabriel**

PAC Treasurer  
Vice President, External Affairs

**John Feeney**

Assistant PAC Treasurer  
Vice President, External Affairs

**Brandy Stacks**

PAC Director  
Director, External Affairs

# Prudential PACs Federal Contributions



State	Candidate			Party	Amount
<b>Alabama</b>					
	Sen.	Richard	Shelby	REP	\$5,000
	Rep.	Bradley	Byrne	REP	\$1,500
	Rep.	Terri	Sewell	DEM	\$3,500
<b>Arkansas</b>					
	Sen.	John	Boozman	REP	\$2,500
	Sen.	Thomas	Cotton	REP	\$2,500
	Rep.	J. French	Hill	REP	\$1,000
<b>Arizona</b>					
	Rep.	Matthew	Salmon	REP	\$5,000
	Rep.	Krysten	Sinema	DEM	\$4,000
	Sen.	John	McCain	REP	\$2,500
<b>California</b>					
	Rep.	Peter	Aguilar	DEM	\$2,000
	Rep.	Xavier	Becerra	DEM	\$2,500
	Rep.	Amerish	Bera	DEM	\$2,500
	Rep.	Tony	Cardenas	DEM	\$1,000
	Rep.	Susan	Davis	DEM	\$1,000
	Rep.	Mark	DeSaulnier	DEM	\$1,000
	Rep.	Kevin	McCarthy	REP	\$5,000
	Rep.	Devin	Nunes	REP	\$5,000
	Rep.	Scott	Peters	DEM	\$1,000
	Rep.	Edward	Royce	REP	\$5,000
	Rep.	Linda	Sanchez	DEM	\$2,500
	Rep.	Bradley	Sherman	DEM	\$2,000
	Rep.	Mark	Takano	DEM	\$1,000
	Rep.	Juan	Vargas	DEM	\$3,500
	Rep.	Maxine	Waters	DEM	\$2,500



# Prudential PACs Federal Contributions



State	Candidate			Party	Amount
<b>Colorado</b>					
	Sen.	Michael	Bennet	DEM	\$5,000
	Rep.	Edwin	Perlmutter	DEM	\$7,500
	Rep.	Jared	Polis	DEM	\$1,500
	Rep.	Scott	Tipton	REP	\$2,500
<b>Connecticut</b>					
	Sen.	Richard	Blumenthal	DEM	\$3,500
	Sen.	Christopher	Murphy	DEM	\$2,500
	Rep.	Joseph	Courtney	DEM	\$5,000
	Rep.	Elizabeth	Esty	DEM	\$2,500
	Rep.	James	Himes	DEM	\$10,000
	Rep.	John	Larson	DEM	\$5,000
<b>Delaware</b>					
	Sen.	Thomas	Carper	DEM	\$1,000
	Rep.	John	Carney	DEM	\$2,500
<b>Florida</b>					
	Sen.	Bill	Nelson	DEM	\$2,500
	Rep.	Vernon	Buchanan	REP	\$1,000
	Rep.	Ander	Crenshaw	REP	\$2,500
	Rep.	Carlos	Curbelo	REP	\$3,000
	Rep.	Gwendolyn	Graham	DEM	\$1,000
	Rep.	Patrick	Murphy	DEM	\$2,500
	Rep.	Dennis	Ross	REP	\$2,500
	Rep.	Debbie Wasserman	Schultz	DEM	\$2,500
	Rep.	Frederica	Wilson	DEM	\$2,000
<b>Georgia</b>					
	Sen.	Johnny	Isakson	REP	\$5,000
	Rep.	John	Lewis	DEM	\$2,000
	Rep.	David	Scott	DEM	\$2,000
	Rep.	Lynn	Westmoreland	REP	\$1,000

# Prudential PACs Federal Contributions



State	Candidate			Party	Amount
<b>Iowa</b>					
	Sen.	Charles	Grassley	REP	\$5,000
	Rep.	David	Loebsack	DEM	\$1,000
<b>Illinois</b>					
	Rep.	Cheryl	Bustos	DEM	\$2,000
	Rep.	John	Cullerton	DEM	\$1,000
	Rep.	Danny	Davis	DEM	\$4,000
	Rep.	Rodney	Davis	REP	\$1,000
	Sen.	Mark	Kirk	REP	\$3,000
	Rep.	Rodney	Davis	REP	\$1,000
	Rep.	Robert	Dold	REP	\$4,500
	Rep.	Bill	Foster	DEM	\$3,500
	Rep.	Randall	Hultgren	REP	\$2,500
	Rep.	Robin	Kelly	DEM	\$2,000
	Rep.	Michael	Quigley	DEM	\$2,500
<b>Indiana</b>					
	Sen.	Joseph	Donnelly	DEM	\$7,000
	Rep.	Allan	Messer	REP	\$2,000
	Rep.	Peter	Visclosky	DEM	\$1,000
	Rep.	Todd	Young	REP	\$3,500
<b>Kansas</b>					
	Sen.	Pat	Roberts	REP	\$2,500
	Rep.	Lynn	Jenkins	REP	\$1,000
<b>Kentucky</b>					
	Sen.	Mitch	McConnell	REP	\$5,000
	Rep.	Garland	Barr	REP	\$1,500
	Rep.	S. Brett	Guthrie	REP	\$1,000

# Prudential PACs Federal Contributions



State	Candidate			Party	Amount
<b>Louisiana</b>					
	Rep.	Charles	Boustany	REP	\$2,500
	Rep.	Stephen	Scalise	REP	\$5,000
<b>Maine</b>					
	Rep.	Bruce	Poliquin	REP	\$3,000
<b>Maryland</b>					
	Rep.	John	Delaney	DEM	\$3,500
	Rep.	Elijah	Cummings	DEM	\$1,500
	Rep.	Steny	Hoyer	DEM	\$2,500
<b>Massachusetts</b>					
	Rep.	Michael	Capuano	DEM	\$1,000
	Rep.	Katherine	Clark	DEM	\$2,000
	Rep.	Seth	Moulton	DEM	\$2,500
	Rep.	Richard	Neal	DEM	\$5,000
<b>Michigan</b>					
	Sen.	Gary	Peters	DEM	\$2,500
	Sen.	Deborah	Stabenow	DEM	\$1,000
	Rep.	John	Conyers	DEM	\$1,000
	Rep.	William	Huizenga	REP	\$2,500
<b>Michigan</b>					
	Rep.	Daniel	Kildee	DEM	\$3,000
	Rep.	Sander	Levin	DEM	\$5,000
	Rep.	Brenda	Lawrence	DEM	\$1,000
	Rep.	Timothy	Walberg	REP	\$3,000
<b>Minnesota</b>					
	Rep.	John	Kline	REP	\$1,000
	Rep.	Erik	Paulsen	REP	\$5,000

# Prudential PACs Federal Contributions



State	Candidate			Party	Amount
<b>Missouri</b>					
	Sen.	Roy	Blunt	REP	\$2,500
	Sen.	Claire	McCaskill	DEM	\$1,000
	Rep.	William	Clay	DEM	\$1,000
	Rep.	Emanuel	Cleaver	DEM	\$7,500
	Rep.	W. Blain	Luetkemeyer	REP	\$5,000
	Rep.	Jason	Smith	REP	\$1,000
	Rep.	Ann	Wagner	REP	\$2,500
<b>Nebraska</b>					
	Sen.	Ben	Sasse	REP	\$2,500
<b>Nevada</b>					
	Sen.	Dean	Heller	REP	\$5,000
	Rep.	Joseph	Heck	REP	\$2,500
<b>New Hampshire</b>					
	Sen.	Kelly	Ayotte	REP	\$3,000
	Rep.	Ann	Kuster	DEM	\$2,000
<b>New Jersey</b>					
	Sen.	Robert	Menendez	DEM	\$5,000
	Rep.	Bonnie Watson	Coleman	DEM	\$2,500
	Rep.	Rodney	Frelinghuysen	REP	\$1,500
	Rep.	Leonard	Lance	REP	\$3,000
	Rep.	Frank	LoBiondo	REP	\$1,500
	Rep.	Thomas	McArthur	REP	\$2,000
	Rep.	Donald	Norcross	DEM	\$2,500
	Rep.	Donald	Payne Jr.	DEM	\$5,000
	Rep.	Frank	Pallone	DEM	\$5,000
	Rep.	Bill	Pascrell	DEM	\$5,000
<b>New Mexico</b>					
	Rep.	Ben Ray	Lujan	DEM	\$2,000
	Rep.	Stevan	Pearce	REP	\$1,000

# Prudential PACs Federal Contributions



State	Candidate			Party	Amount
<b>New York</b>					
	Sen.	Kirsten	Gillibrand	DEM	\$2,500
	Sen.	Charles	Schumer	DEM	\$5,000
	Rep.	Joseph	Crowley	DEM	\$2,500
	Rep.	Hakeem	Jeffries	DEM	\$1,000
	Rep.	Carolyn	Maloney	DEM	\$1,000
	Rep.	Gregory	Meeks	DEM	\$2,500
	Rep.	Thomas	Reed	REP	\$2,500
	Rep.	Kathleen	Rice	DEM	\$2,500
<b>North Carolina</b>					
	Sen.	Richard	Burr	REP	\$5,000
	Rep.	Alma	Adams	DEM	\$1,000
	Rep.	George	Holding	REP	\$3,500
<b>North Carolina</b>					
	Rep.	Richard	Hudson	REP	\$1,000
	Rep.	Patrick	McHenry	REP	\$5,000
	Rep.	Robert	Pittenger	REP	\$1,000
<b>North Dakota</b>					
	Sen.	Heidi	Heitkamp	DEM	\$3,500
	Sen.	John	Hoeven	REP	\$3,000
<b>Ohio</b>					
	Sen.	Sherrod	Brown	DEM	\$5,000
	Rep.	Joyce	Beatty	DEM	\$4,500
	Rep.	John	Boehner	REP	\$5,000
	Rep.	Marcia	Fudge	DEM	\$4,500
	Rep.	James	Renacci	REP	\$3,000
	Rep.	Steve	Stivers	REP	\$3,500
<b>Oklahoma</b>					
	Rep.	Frank	Lucas	REP	\$1,000

# Prudential PACs Federal Contributions



State	Candidate			Party	Amount
<b>Oregon</b>					
	Sen.	Jeffery	Merkley	DEM	\$1,000
	Sen.	Ron	Wyden	DEM	\$5,000
	Rep.	Earl	Blumenauer	DEM	\$5,000
	Rep.	Suzanne	Bonamici	DEM	\$2,000
	Rep.	Kurt	Schrader	DEM	\$3,500
<b>Pennsylvania</b>					
	Sen.	Robert	Casey	DEM	\$3,500
	Sen.	Patrick	Toomey	REP	\$5,000
	Rep.	Brendan	Boyle	DEM	\$5,000
	Rep.	Matthew	Cartwright	DEM	\$3,000
	Rep.	G. Mike	Kelly	REP	\$2,500
	Rep.	Patrick	Meehan	REP	\$4,500
<b>Rhode Island</b>					
	Sen.	Jack	Reed	DEM	\$1,500
<b>South Carolina</b>					
	Sen.	Timothy	Scott	REP	\$5,000
<b>South Dakota</b>					
	Sen.	John	Thune	REP	\$5,000
	Rep.	Kristi	Noem	REP	\$5,000
<b>Tennessee</b>					
	Rep.	Diane	Black	REP	\$1,500
	Rep.	Stephen	Fincher	REP	\$2,500

# Prudential PACs Federal Contributions



State	Candidate			Party	Amount
<b>Texas</b>					
	Sen.	John	Cornyn	REP	\$5,000
	Rep.	Kevin	Brady	REP	\$5,000
	Rep.	Jeb	Hensarling	REP	\$5,000
	Rep.	Samuel	Johnson	REP	\$1,000
	Rep.	Kenny	Marchant	REP	\$2,000
	Rep.	Roger	Williams	REP	\$1,000
<b>Utah</b>					
	Rep.	Jason	Chaffetz	REP	\$3,000
<b>Virginia</b>					
	Sen.	Timothy	Kaine	DEM	\$1,000
	Rep.	Donald	Beyer	DEM	\$1,000
	Rep.	Robert	Hurt	REP	\$1,000
	Rep.	Robert	Scott	DEM	\$1,000
<b>Washington</b>					
	Sen.	Maria	Cantwell	DEM	\$2,500
	Sen.	Patricia	Murray	DEM	\$2,500
<b>Washington</b>					
	Rep.	Suzan	DelBene	DEM	\$2,500
	Rep.	Dennis	Heck	DEM	\$2,000
	Rep.	Derek	Kilmer	DEM	\$2,500
	Rep.	David	Reichert	REP	\$1,000

# Prudential PACs Federal Contributions



State	Candidate			Party	Amount
<b>Wisconsin</b>					
	Sen.	Tammy	Baldwin	DEM	\$2,000
	Rep.	Sean	Duffy	REP	\$2,500
	Rep.	Ronald	Kind	DEM	\$5,000
	Rep.	Gwendolynne	Moore	DEM	\$5,000
	Rep.	Mark	Pocan	DEM	\$4,000
	Rep.	Paul	Ryan	REP	\$5,000
<b>Wyoming</b>					
	Sen.	John	Barrasso	REP	\$2,500



# Prudential PAC State Contributions



State	Candidate			Party	Amount
<b>Arizona</b>					
	State Sen.	Sylvia	Allen	REP	\$750
	State Sen.	Carlyle	Begay	DEM	\$1,000
	State Sen.	Andy	Biggs	REP	\$2,500
	State Sen.	Adam	Driggs	REP	\$500
	State Sen.	David	Farnsworth	REP	\$1,750
	State Sen.	Katie	Hobbs	DEM	\$1,000
	State Sen.	John	Kavanagh	REP	\$750
	State Sen.	Debbie	Lesko	REP	\$750
	State Sen.	Barbara	McGuire	DEM	\$500
	State Sen.	Catherine	Miranda	DEM	\$500
	State Sen.	Lynne	Pancrazi	DEM	\$750
	State Sen.	Don	Shooter	REP	\$750
	State Sen.	Kelli	Ward	REP	\$750
	State Sen.	Steven	Yarbrough	REP	\$1,500
	State Sen.	Kimberly	Yee	REP	\$750
	State Rep.	Reginald	Bolding	DEM	\$500
	State Rep.	Doug	Coleman	REP	\$750
	State Rep.	Karen	Fann	REP	\$1,750
	State Rep.	Jonathan	Larkin	DEM	\$1,000
	State Rep.	David	Livingston	REP	\$2,500
	State Rep.	Phil	Lovas	REP	\$750
	State Rep.	Kate Brophy	McGee	REP	\$500
	State Rep.	Eric	Meyer	DEM	\$1,000
	State Rep.	Steve	Montenegro	REP	\$1,500
	State Rep.	Justin	Olson	REP	\$1,750
	State Rep.	Lisa	Otondo	DEM	\$500
	State Rep.	Bob	Robson	REP	\$750
	State Rep.	David	Stevens	REP	\$1,000

# Prudential PAC State Contributions



State	Candidate			Party	Amount
<b>California</b>					
	Lt. Governor	Kevin	De Leon	DEM	\$1,500
	Controller	Betty	Yee	IND	\$1,500
	State Sen.	Toni	Atkins	DEM	\$1,500
	State Sen.	Tom	Berryhill	REP	\$1,000
	State Sen.	Jean	Fuller	REP	\$1,500
	State Sen.	Ted	Gaines	REP	\$1,500
	State Sen.	Ricardo	Lara	DEM	\$1,500
	State Sen.	Richard	Roth	DEM	\$1,500
	State Rep.	Ian	Calderon	DEM	\$1,000
	State Rep.	Ling-Ling	Chang	REP	\$1,000
	State Rep.	Jim	Cooper	DEM	\$1,000
	State Rep.	Tom	Daly	DEM	\$1,500
	State Rep.	Mike	Gatto	DEM	\$1,000
	State Rep.	Jimmy	Gomez	DEM	\$1,500
	State Rep.	Brian	Maienschein	REP	\$1,000
	State Rep.	Chad	Mays	REP	\$1,500
	State Rep.	Anthony	Rendon	DEM	\$1,500
<b>Georgia</b>					
	Lt. Governor	Casey	Cagle	REP	\$1,200
	Atty. General	Samuel	Olens	REP	\$1,000
	State Sen.	Charles	Bethel	REP	\$750
	State Sen.	William	Cowsert	REP	\$500
	State Sen.	Steve	Henson	DEM	\$250
	State Sen.	David	Shafer	REP	\$750
	State Rep.	Stacey	Abrams	DEM	\$300
	State Rep.	David	Ralston	REP	\$500
	State Rep.	Richard	Smith	REP	\$500
	State Rep.	Calvin	Smyre	DEM	\$250

# Prudential PAC State Contributions



State	Candidate			Party	Amount
<b>Idaho</b>					
	Atty. General	Lawrence	Wasden	REP	\$500
<b>Illinois</b>					
	State Sen.	Tim	Bivins	REP	\$500
	State Sen.	William	Brady	REP	\$750
	State Sen.	William	Haine	DEM	\$500
	State Sen.	Don	Harmon	DEM	\$500
	State Sen.	Christine	Radogno	REP	\$500
	State Sen.	Chapin	Rose	REP	\$500
	State Sen.	Ira	Silverstein	DEM	\$500
	State Sen.	Dave	Syverson	REP	\$500
	State Rep.	Anthony	DeLuca	DEM	\$500
	State Rep.	Jim	Durkin	REP	\$500
	State Rep.	Frank	Mautino	DEM	\$500
<b>Indiana</b>					
	State Sen.	Phillip	Boots	REP	\$250
	State Sen.	Douglas	Eckerty	REP	\$250
	State Sen.	Timothy	Lanane	DEM	\$250
	State Sen.	Travis	Holdman	REP	\$1,000
	State Sen.	Greg	Walker	REP	\$250
	State Rep.	Martin	Carbaugh	REP	\$500
	State Rep.	Christina	Hale	DEM	\$250
	State Rep.	Matthew	Lehman	REP	\$1,500
	State Rep.	Gerald	Torr	REP	\$250
<b>Ohio</b>					
	State Sen.	Kevin	Bacon	REP	\$350
	State Sen.	Edna	Brown	DEM	\$500
	State Sen.	Lou	Gentile	DEM	\$500
	State Sen.	Joe	Schiavoni	DEM	\$500

# Prudential PAC State Contributions



State	Candidate			Party	Amount
<b>Ohio</b>					
	State Sen.	Sandra	Williams	DEM	\$350
	State Rep.	Heather	Bishoff	DEM	\$500
	State Rep.	Robert	Hackett	REP	\$850
	State Rep.	Jay	Hottinger	REP	\$850
	State Rep.	Sarah	LaTourette	REP	\$350
	State Rep.	Cliff	Rosenberger	REP	\$1,000
	State Rep.	Frederick	Strahorn	DEM	\$250
<b>Oregon</b>					
	Atty. General	Ellen	Rosenblum	DEM	\$1,000
<b>Pennsylvania</b>					
	State Sen.	Jacob	Corman	REP	\$1,000
	State Sen.	Jay	Costa, Jr.	DEM	\$500
	State Sen.	Lawrence	Farnese	DEM	\$500
	State Sen.	Joseph	Scarnati	REP	\$1,000
	State Sen.	Donald	White	REP	\$1,000
	State Sen.	Sean	Wiley	DEM	\$1,000
	State Sen.	Anthony	Williams	DEM	\$500
	State Rep.	Kerry	Benninghoff	REP	\$1,000
	State Rep.	Ryan	Bizzarro	DEM	\$300
	State Rep.	Peter	Daley	DEM	\$700
	State Rep.	Ryan	Mackenzie	REP	\$1,000
	State Rep.	Tina	Pickett	REP	\$1,000
	State Rep.	Dave	Reed	REP	\$1,000
	State Rep.	Michael	Tobash	REP	\$1,000
	State Rep.	Michael	Turzai	REP	\$2,000
	State Rep.	Martina	White	REP	\$500
<b>South Dakota</b>					
	Atty. General	Marty	Jackley	REP	\$1,000

# Prudential PAC State Contributions



State	Candidate			Party	Amount
<b>Texas</b>					
	Governor	Greg	Abbott	REP	\$5,000
	Lt. Governor	Dan	Patrick	REP	\$1,500
	State Sen.	C. Brandon	Creighton	REP	\$1,000
	State Sen.	Kelly	Hancock	REP	\$1,000
	State Sen.	Jose	Rodriguez	DEM	\$1,000
	State Sen.	Kirk	Watson	DEM	\$1,000
	State Rep.	Greg	Bonnen	REP	\$500
	State Rep.	John	Frullo	REP	\$1,000
	State Rep.	Robert	Guerra	DEM	\$500
	State Rep.	Todd	Hunter	REP	\$500
	State Rep.	Morgan	Meyer	REP	\$500
	State Rep.	Joseph	Moody	DEM	\$500
	State Rep.	Sergio	Munoz	DEM	\$500
	State Rep.	Rene	Oliveira	DEM	\$500
	State Rep.	Dennis	Paul	REP	\$500
	State Rep.	Kenneth	Sheets	REP	\$1,000
	State Rep.	Joe	Straus	REP	\$1,500
	State Rep.	Larry	Taylor	REP	\$1,000
	State Rep.	Senfronia	Thompson	DEM	\$500
	State Rep.	Hubert	Vo	DEM	\$500
	State Rep.	Paul	Workman	REP	\$500

## U.S. Senate – Leadership PACs

Committee	Candidate		Party	State	Amount
21st Century Majority Fund	Sen. Johnny	Isakson	REP	GA	\$5,000
Alamo PAC	Sen. John	Cornyn	REP	TX	\$5,000
America Works PAC	Sen. Sherrod	Brown	DEM	OH	\$2,500
Bluegrass PAC	Sen. Mitch	McConnell	REP	KY	\$5,000
Cory PAC, Inc.	Sen. Cory	Booker	DEM	NJ	\$5,000
Defend America PAC	Sen. Richard	Shelby	REP	AL	\$5,000
Forward Together PAC	Sen. Mark	Warner	DEM	VA	\$5,000
Freedom Fund	Sen. Michael	Crapo	REP	ID	\$5,000
Heartland Values PAC	Sen. John	Thune	REP	SD	\$5,000
LEGPAC	Sen. Ben	Cardin	DEM	MD	\$2,000
Making Business Excel PAC	Sen. Michael	Enzi	REP	WY	\$5,000
MURPHPAC	Sen. Chris	Murphy	DEM	CT	\$2,500
New Millennium PAC	Sen. Robert	Menendez	DEM	NJ	\$5,000
Next Century Fund	Sen. Richard	Burr	REP	NC	\$5,000
Rock City PAC	Sen. Bob	Corker	REP	TN	\$5,000
Tenn PAC	Sen. Lamar	Alexander	REP	TN	\$5,000
The Peter Norbeck Leadership PAC	Sen. Michael	Rounds	REP	SD	\$5,000
Treasure State PAC	Sen. Jon	Tester	DEM	MT	\$5,000

## U.S. House – Leadership PACs

Committee	Candidate		Party	State	Amount
AMERIPAC: The Fund for a Greater America	Rep. Steny	Hoyer	DEM	MD	\$5,000
Ann PAC	Rep. Ann	Wagner	REP	MO	\$2,500
Ax PAC	Rep. Sean	Duffy	REP	WI	\$2,500
BADGERPAC	Rep. Ron	Kind	DEM	WI	\$5,000
Building America's Republican Representation PAC (BARRPAC)	Rep. Garland	Barr	REP	KY	\$3,500
Building Leadership & Inspiring New Enterprise PAC	Rep. W. Blaine	Luetkemeyer	REP	MO	\$2,500
Building Relationships in Diverse Geographic Environments PAC	Rep. James	Clyburn	DEM	SC	\$5,000
Democrats Reshaping America (DREAMPAC)	Rep. Linda	Sanchez	DEM	CA	\$5,000
Fearless PAC	Rep. Jared	Polis	DEM	CO	\$2,000
First in Freedom PAC	Rep. Richard	Hudson	REP	NC	\$1,000
Freedom & Security PAC	Rep. John	Kline	REP	MN	\$5,000
Grassroots Organizing Acting & Leading PAC (GoalPAC)	Rep. Sander	Levin	DEM	MI	\$2,500
Jobs, Economy, & Budget Fund (JEB FUND)	Rep. Jeb	Hensarling	REP	TX	\$5,000
Jobs & Innovation Matter PAC (JIMPAC)	Rep. James	Himes	DEM	CT	\$2,500
Jobs, Opportunities, and Education PAC (JOE-PAC)	Rep. Joseph	Crowley	DEM	NY	\$5,000
Liberty & Prosperity PAC	Rep. Rodney	Frelinghuysen	REP	NJ	\$4,500
Majority Committee PAC	Rep. Kevin	McCarthy	REP	TX	\$5,000
Making America Prosperous PAC	Rep. Kevin	Brady	REP	TX	\$5,000
More Conservatives PAC	Rep. Patrick	McHenry	REP	NC	\$5,000

## U.S. House – Leadership PACs

Committee	Candidate		Party	State	Amount
New Pioneers PAC	Rep. Greg	Walden	REP	OR	\$3,000
Pioneer PAC	Rep. Patrick	Tiberi	REP	OH	\$5,000
Prosperity Action Inc.	Rep. Paul	Ryan	REP	WI	\$5,000
Silk PAC	Rep. Bill	Pascrell	DEM	NJ	\$5,000
Synergy PAC	Rep. John	Larson	DEM	CT	\$5,000
The Eye of the Tiger PAC	Rep. Steve	Scalise	REP	LA	\$5,000
The Freedom Project	Rep. John	Boehner	REP	OH	\$5,000
The Madison PAC	Rep. Richard	Neal	DEM	MA	\$5,000
Victory in November Election PAC (VINEPAC)	Rep. Michael	Thompson	DEM	CA	\$5,000



## Other Committees

Committee	Party	State	Amount
Blue Dog Political Action Committee	DEM		\$5,000
California Republican Party	REP	CA	\$1,200
Committee for Hispanic Causes/Building Our Leadership Diversity PAC (CHC BOLD PAC)	DEM		\$5,000
Congressional Black Caucus PAC	DEM		\$5,000
Indiana House Democratic Caucus	DEM	IN	\$1,000
Indiana House Republican Campaign Committee	REP	IN	\$1,000
Indiana Senate Democrat Committee	DEM	IN	\$1,000
Indiana Senate Majority Campaign Committee	REP	IN	\$1,000
Moderate Democrats PAC	DEM		\$5,000
New Democrat Coalition PAC	DEM		\$5,000
Pennsylvania House Republican Campaign Committee	REP	PA	\$1,000
Republican Mainstreet Partnership PAC	REP		\$5,000
Robert Menendez Legal Expense Trust	DEM	NJ	\$10,000

# Prudential New York PAC Contributions



Committee	Party	State	Amount
Wounded Warrior Project, Inc.		NY	\$1,857.40

## Annual dues, assessments and contributions of \$25,000 or more to trade associations and tax-exempt groups

<b>ORGANIZATION*</b>	<b>LOBBYING (\$)**</b>	<b>TOTAL DUES</b>
American Bankers Insurance Association	\$7,500.00	\$30,000.00
American Council of Life Insurers	\$354,050.00	\$2,067,634.00
Americas Health Insurance Plans (AHIP)	\$34,307.48	\$81,260.00
Associated Industries of Florida	\$21,600.00	\$29,000.00
Association for Advanced Life Underwriting	\$35,640.42	\$335,640.42
Association for Competitive Taxation (ACT)	\$40,000.00	\$40,000.00
Association of California Life & Health Insurance Companies	\$15,000.00	\$100,000.00
Association of Institutional Investors	\$2,500.00	\$55,000.00
Business Roundtable	\$129,558.00	\$235,560.00
Conference of Western Attorneys General	-	\$25,000.00
Connecticut Business & Industry Association	\$8,000.00	\$32,000.00
Corporate Executive Board	-	\$565,238.00
Council for Disability Awareness	-	\$50,000.00
Council on Foreign Relations	-	\$60,000.00
Democratic Attorneys General Association	\$25,000.00	\$25,000.00
Democratic Governors Association	-	\$25,000.00
ERISA Industry Committee	\$8,750.00	\$25,000.00
Financial Services Roundtable	\$93,625.00	\$267,500.00
Florida Insurance Council, Inc.	\$19,255.48	\$50,455.00
Geneva Association	-	\$79,183.16
HR Policy Association	\$19,200.00	\$32,000.00
Illinois Life Insurance Council	\$8,880.00	\$29,600.00
Institutional Investor	-	\$244,790.44
Insurance Association of Connecticut	\$5,400.00	\$27,000.00
Insured Retirement Institute	\$11,475.00	\$191,250.00
Integrated Benefits Institute	-	\$50,000.00
Investment Company Institute (ICI)	-	\$906,080.40
Life Insurance and Market Research Assn.	-	\$594,226.00
Life Insurance Council of New York, Inc.	\$15,000.00	\$60,000.00
Metro Hartford Alliance	\$4,050.00	\$135,000.00
Mortgage Bankers Association	\$4,400.00	\$50,000.00
National Minority Supplier Development Council Inc.	-	\$38,000.00
National Multi Housing Council	\$11,270.00	\$35,000.00
National Structured Settlement Trade	\$3,600.00	\$40,000.00
New Jersey State Chamber of Commerce	\$9,406.50	\$62,710.00

\*Prudential belongs and contributes to various organizations that maintain a relevant focus on matters concerning our business interests including membership organizations, trade groups, social welfare organizations and 527 organizations.

\*\* Non-deductible portion of dues computed pursuant to I.R.C. § 162 (e) and Treas. Reg. § 1.162.29.

## Annual dues, assessments and contributions of \$25,000 or more to trade associations and tax-exempt groups

<b>ORGANIZATION*</b>	<b>LOBBYING (\$) **</b>	<b>TOTAL DUES</b>
Offshoring Research Network (ORN) of Duke University	-	\$25,000.00
Republican Attorneys General Association	\$25,000.00	\$25,000.00
Republican Governors Association	-	\$25,000.00
Securities Industry & Financial Markets Association	\$21,410.85	\$142,739.00
The Conference Board Inc.	-	\$116,950.00
The Insurance Federation of Pennsylvania	\$13,000.00	\$65,000.00
The Real Estate Roundtable	\$19,500.00	\$30,000.00
United State Chamber of Commerce***	\$65,250.00	\$185,000.00
United States Institute for Legal Reform	\$55,000.00	\$100,000.00
Urban Land Institute	-	\$36,166.05
Women's Business Enterprise National Council	-	\$31,000.00
World 50 Inc.	-	\$150,000.00

\*Prudential belongs and contributes to various organizations that maintain a relevant focus on matters concerning our business interests including membership organizations, trade groups, social welfare organizations and 527 organizations.

\*\* Non-deductible portion of dues computed pursuant to I.R.C. § 162 (e) and Treas. Reg. § 1.162.29.

\*\*\* Contribution includes the following Member Dues: US Chamber (\$100,000); US-India Business Council (\$10,000); US-Japan Business Council (\$10,000); US-Korea Business Council (\$25,000) and US Chamber's Asia Program sponsorship (\$40,000).